

# Making great iNaturalist observations

**D**o you have a passion for nature? Do you love to go outdoors and explore the world around you? Do you want to help protect the environment and contribute to scientific research? If so, you should consider using iNaturalist to share your observations and learn from others.

**T**he iNaturalist app is a free and easy-to-use platform that allows you to take photos of plants, animals, and fungi in the field and upload them to a global database. You can also identify species using the app's built-in AI tools or by asking other users for help. iNaturalist is a great way to connect with nature enthusiasts and scientists from all over the world.

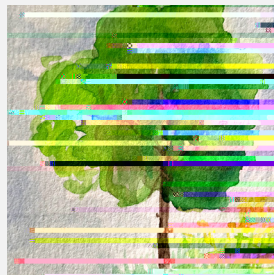
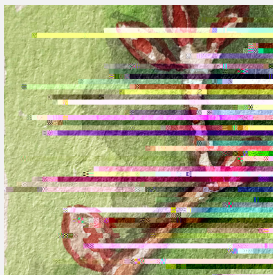
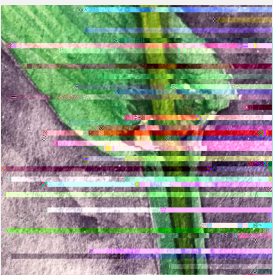
Artwork by Dr. F. Beaugregard, 2023, McGill University Herbarium



**De ai, e ai, e ai!** The iNaturalist app is a free and easy-to-use platform that allows you to take photos of plants, animals, and fungi in the field and upload them to a global database. You can also identify species using the app's built-in AI tools or by asking other users for help.

**E**nsure that your observations are accurate and helpful. Take clear photos of the specimen, including the whole plant or animal, and any identifying features. Provide a detailed description of the specimen, including its location, date, and time of day. Use the iNaturalist app's built-in AI tools to help identify the species, or ask other users for help.

**T**he iNaturalist app is a great way to connect with nature enthusiasts and scientists from all over the world. You can also use the app to track changes in the environment over time. For example, you can track the distribution of a particular species or the growth of a particular plant. This information can be used to help scientists understand the impact of climate change and other environmental factors.



**E**nsure that your observations are accurate and helpful. Take clear photos of the specimen, including the whole plant or animal, and any identifying features. Provide a detailed description of the specimen, including its location, date, and time of day. Use the iNaturalist app's built-in AI tools to help identify the species, or ask other users for help.

**E**nsure that your observations are accurate and helpful. Take clear photos of the specimen, including the whole plant or animal, and any identifying features. Provide a detailed description of the specimen, including its location, date, and time of day. Use the iNaturalist app's built-in AI tools to help identify the species, or ask other users for help.

**T**he iNaturalist app is a great way to connect with nature enthusiasts and scientists from all over the world. You can also use the app to track changes in the environment over time. For example, you can track the distribution of a particular species or the growth of a particular plant. This information can be used to help scientists understand the impact of climate change and other environmental factors.

THANK YOU FOR CONTRIBUTING YOUR OBSERVATIONS TO HELP TRACK BIODIVERSITY!



<https://www.mcgill.ca/sustainability/commitments/biodiversity-plan>

**A**lways use the iNaturalist app to take photos of specimens in the field. This ensures that the photos are accurate and helpful. You can also use the app to track changes in the environment over time. For example, you can track the distribution of a particular species or the growth of a particular plant.

**De ai, e ai, e ai!** The iNaturalist app is a free and easy-to-use platform that allows you to take photos of plants, animals, and fungi in the field and upload them to a global database. You can also identify species using the app's built-in AI tools or by asking other users for help.

**H/b/a?**

**M**ake sure that your observations are accurate and helpful. Take clear photos of the specimen, including the whole plant or animal, and any identifying features. Provide a detailed description of the specimen, including its location, date, and time of day. Use the iNaturalist app's built-in AI tools to help identify the species, or ask other users for help.

**De ai, e ai, e ai!**

**Y**ou can also use the app to track changes in the environment over time. For example, you can track the distribution of a particular species or the growth of a particular plant. This information can be used to help scientists understand the impact of climate change and other environmental factors.



**McGill**

# Conseils pour consigner de bonnes observations dans iNaturalist

Figure 1. Les observations de la même espèce (ici le papillon *Pieris rapae*) dans iNaturalist. Les observations sont classées par date et par lieu. Les observations sont classées par date et par lieu. Les observations sont classées par date et par lieu.



Observer une espèce dans iNaturalist est une expérience enrichissante. Cependant, pour que vos observations soient utiles à la communauté, il est important de suivre certaines règles de base.

- 1. Prenez des photos claires et précises de l'espèce que vous observez. Évitez les photos floues ou prises de loin.
- 2. Prenez des photos sous différents angles pour mieux identifier l'espèce.
- 3. Prenez des photos dans un environnement naturel, sans manipulation de l'espèce.
- 4. Prenez des photos dans un environnement naturel, sans manipulation de l'espèce.

