

FACTOR RECEPTOR GENE IN A HUMAN ASTROCYTOMA CELL LINE

Jorge Filmus¹, Michael N. Pollak^{1,*}

human

J. Gregory Cairncross² and Ronald N. Buick¹

¹Ontario Cancer Institute and Department of Medical Biophysics,

²The London Regional Cancer Centre, London, Ontario, Canada

We report here that SK-MG-3, a human astrocytoma cell line with a high number of epidermal growth factor (EGF) receptors, has an amplified and other cell lines that have EGF receptor gene amplifications, we have not detected inhibition of *in vitro* proliferation of the SK-MG-3 line by EGF.

© 1985 Academic Press, Inc.

The finding that the transforming gene of avian erythroblastosis virus, the *erb-B* oncogene, is homologous to the kinase portion of the epidermal growth factor receptor gene (EGFRG) (1,2) suggests that amplification of certain neoplasms.

It has been clearly shown that EGF concentrations comparable to those in human plasma have been reported in human cerebrospinal fluid (6). Recently Liberman et al. (7) reported that a significant proportion of primary human glioblastomas morphologically graded as glioblastoma multiforme (GM) (astrocytoma grade III or IV) exhibits an elevated EGF receptor level, and subsequently they demonstrated that 4 of 10 primary GM examined have an amplified EGFRG gene (8).

We have estimated EGF receptor number in 22 cell lines derived from grade III or IV astrocytomas. One cell line, SK-MG-3, exhibited an unusually high

*Present address: Department of Medicine, McGill University and Division of Oncology, Sir Mortimer Davis Jewish General Hospital, 3755 Cote Ste. Catherine Road, Montreal, Quebec, Canada, H3T 1E2.

Abbreviations: EGF, epidermal growth factor; EGFRG, epidermal growth factor receptor gene; GM, glioblastoma multiforme; FCS, fetal calf serum; kb, kilobase.

number of specific EGF binding sites as estimated by [¹²⁵I]EGF binding studies. All cell lines were subsequently screened for EGFRG amplification, and SK-MG-3 was the only line with detectable amplification and rearrangement of the EGFRG. Despite the rearrangement, no abnormal EGFRG-related mRNA species were detected.

Since other cell lines which have an amplified EGFRG are growth-inhibited by EGF (9,10), we examined the effect of this growth factor on the

MATERIALS AND METHODS

Cell Lines: The following cell lines originated from astrocytomas grade III or IV were studied: SK-MG-1,-2,-3,-4,-6,-7,-8,-10,-11,-12,-13,-14,-15, SK-MS and SK-A02, derived at the Memorial Sloan-Kettering Cancer Center (11,12); U-87MG, U-138MG, U-178MG, U-251MG, U-343MG and U-373MG, derived at

provided by Dr. R. Phillips, were used as controls. MDA-468 cells were routinely cultured in L-15 medium, supplemented with 10% fetal calf serum (FCS). All the other cell lines were cultured in alpha medium also supplemented with 10% FCS.

[¹²⁵I]EGF-Binding Studies: Binding studies were carried out in triplicate on subconfluent cells grown on 35 mm dishes. Cells were washed twice with binding buffer (serum-free alpha medium with 1 mg/ml bovine serum albumin and 5 mM HEPES, pH 6.8), and then incubated for two hours at 37°C in binding buffer containing 5×10^{-9} M EGF (Collaborative Bioproducts) at concentration

nuclei. Cells were then washed 3 times with binding buffer, solubilized in 0.5N NaOH, and radioactivity determined. Specific binding was estimated by subtracting counts bound in the presence of excess unlabelled EGF (10^{-7} M) from total counts bound. The mean number of cells on two companion dishes as counted by hemocytometer following trypsinization was used to estimate the number of binding sites per cell. For certain cell lines displacement

varying concentrations of EGF between 5×10^{-11} M and 10^{-8} M, and Scatchard plots were derived.

Isolation of DNA and Southern Blotting: High molecular weight genomic DNA was isolated by using NaDodSO₄/proteinase-K lysis, organic extraction and NaCl/ethanol precipitation (16). DNA was digested with HindIII or EcoRI, electrophoresed in 0.8% agarose and transferred to a Zetabind membrane (MCP-BIBCO). Hybridizations and washings were performed using high

Isolation of RNA and RNA Blotting: Total RNA was isolated by guanidine isothiocyanate solubilization and centrifugation over a CsCl cushion (18). 3 µg of poly(A)⁺ RNA, purified by passage over oligo(dT)-cellulose, was treated with dimethylsulfoxide and electrophoresed on a 1% agarose formaldehyde gel, transferred to a Gene-Screen plus filter (19) and hybridized using high stringent conditions.

Probes: The 2.4 kilobase (kb) c-DNA probe pE7 has been isolated by Merlino et al. (20). It encodes a portion of the EGFRG and is highly homologous to

HindIII - EcoRI fragment isolated from the A165 clone (21) on the basis of its homology to the V-erb-B gene.

Effect of EGF Concentration on the Proliferation of Cell Lines: 2×10^4 cells were plated in triplicate in 35 mm multiwell plates containing alpha

alpha media supplemented with 0.1% FCS and varying concentrations of EGF at 37°C in 5% CO₂ for one week, with media changes every 48 hours, after which cells were trypsinized and counted with a coulter counter.

RESULTS

Estimation of EGF Binding Sites in Astrocytoma Cell Lines We screened 22 astrocytoma cell lines for specific EGF binding sites using a [¹²⁵I]EGF binding assay. The SK-MG-3 cell line bound approximately 50 fmol EGF/10⁵

conditions (data not shown). Results from a typical astrocytoma line, (SK-MG-5), two EGFRG amplified cell lines (MDA-468 and A-431), normal human fibroblasts (427 H) and SK-MG-3 are shown in Table 1. Figure 1 shows EGF

lines. Although extrapolation of binding constants and receptor number from Scatchard plots is hazardous under conditions where there may be heterogeneity of receptors (22,23) and/or labelled ligands (24), and equilibrium is difficult to document due to receptor internalization, K_d was

receptor numbers were similar to those obtained by measuring specific binding at 5 x 10⁻⁹M EGF.

Southern Blot Analysis Using a cDNA probe (pE7) all the cell lines were screened for amplification and rearrangements of the EGFRG.

DNA extracted from each cell line was digested with EcoRI or HindIII and Southern blot analysis was performed as described in Methods. Only SK-MG-3

Table 1. Estimates of EGF Binding Sites per Cell for various Cell Lines

Cell line	Origin	fmol EGF bound/10 ⁵ cells	Estimated EGF receptors number per cell
SKMG-3	GM	47	2.8 x 10 ⁵
SKMG-5	GM	16	9.3 x 10 ⁴
468	Breast tumor	163	9.7 x 10 ⁵
A-431	Epidermoid tumor	419	2.5 x 10 ⁶

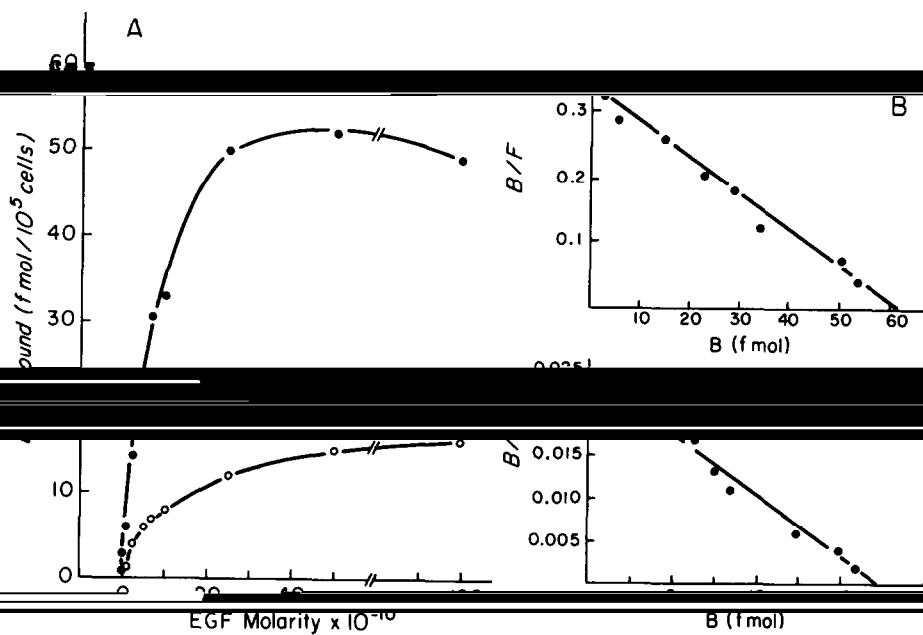
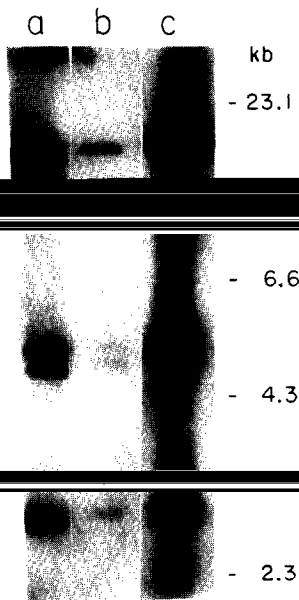


Figure 1. EGF binding to GM cell lines. (A) Specific binding of EGF to SK-MG-3 and SK-MG-5 cells as a function of EGF concentration. (B) and (C) Scatchard plots of binding data for SK-MG-3 and SK-MG-5, respectively.

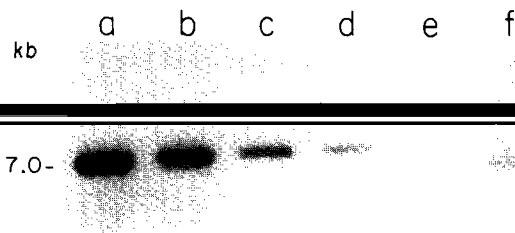
DNA showed an amplified EGFRG. Fig. 2 shows that the level of amplification of the SK-MG-3 cells is not as high as it is in MDA-468 cells, correlating with the number of EGF receptors found in each cell line (Table 1). Both the HindIII (Fig. 2) and the EcoRI (not shown) restriction patterns of the SK-MG-3 DNA allowed us to detect two bands (arrows) not donors indicating that the EGFRG is rearranged. The EcoRI and HindIII restriction patterns of the other astrocytoma cell lines did not show any evidence of rearrangement of the EGFRG (data not shown).

We estimated the degree of amplification comparing the signal intensity of receptor DNA fragments in successive dilutions of DNA extracted from SK-MG-3 cells with the signal intensity in DNA obtained from normal human fibroblasts (427-N). For this purpose we used a genomic c-erb-B probe which codes for a part of the kinase portion of the EGFRG. Fig. 3 shows that the gene is amplified approximately 8 times.

Northern blot analysis Since the EGFRG is rearranged in the SK-MG-3 cells, species. Such a situation has been found in A-431 cells, which also have a rearranged EGFRG (20). mRNA was extracted and Northern blot analysis was



2



3

Figure 2. Southern blot analysis of the EGFRG. 10 µg of DNA were digested with HindIII and hybridized with a ³²P-labelled pE7 probe. a) SK-MG-3; b) 427-N; c) MDA-468.

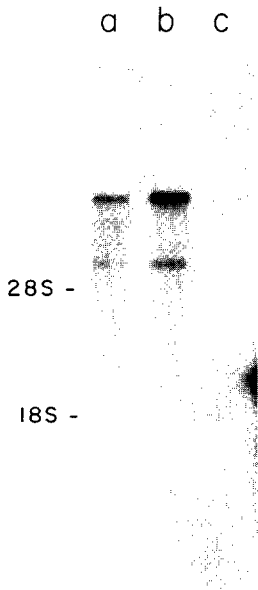
Figure 3. Quantification of the EGFRG amplification in SK-MG-3 cells. Serial dilutions of EcoRI-restricted DNA from SK-MG-3 were performed and hybridized with a ³²P-labelled c-erb-B probe. Small differences in the position of the bands are due to different salt concentrations after the dilution of the DNA. a) 20 µg; b) 10 µg; c) 5 µg; d) 2.5 µg; e) 1.25 µg; f) 20 µg from normal human fibroblasts (427-N)

that the EGFRG is overexpressed in SK-MG-3 cells (Fig. 4) although the

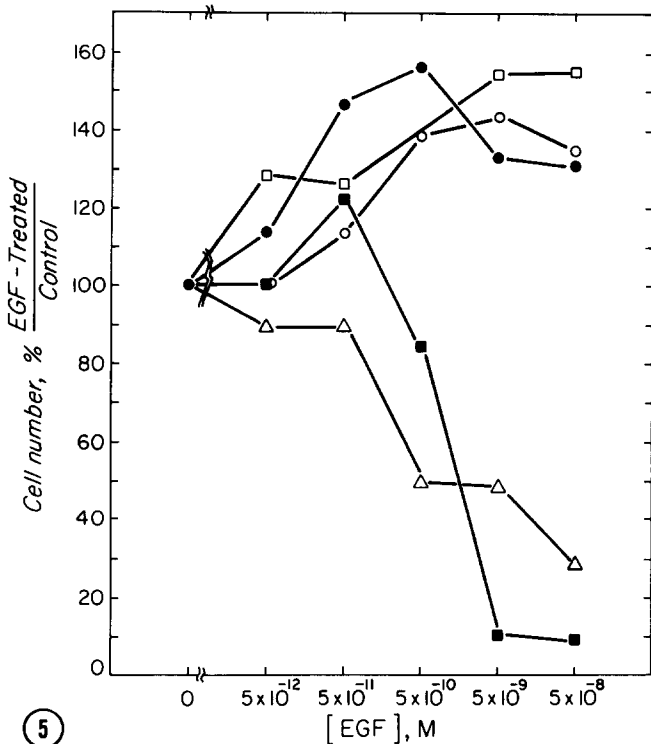
degree of expression is not as high as in MDA-468 cells, which have

10.0 and 5.0 kb species being the most prevalent transcripts.

Effect of EGF in the Growth of SKMG-3 Cells It has been reported that A-431 and MDA-468, two cell lines that have very high number of EGF receptors as a consequence of gene amplification, are growth-inhibited by EGF concentrations that stimulate most other cells (9,10). Fig. 5 shows that EGF stimulates the growth of the SK-MG-3 cell line at the same concentrations that strongly inhibit the growth of A-431 and MDA-468 cells. The degree of stimulation found in the astrocytoma cells (50%) is similar to that seen in normal human fibroblasts which have 5×10^4 receptors per



④



⑤

Figure 4. Northern blot analysis of the EGF receptor. ³²P-labelled pE7 was used as probe a) SK-MG-3; b) MDA-468; c) 427-N.

Figure 5. Effect of EGF concentration on proliferation of cell lines. Points represent percentage change in cell numbers for cell grown in various EGF-supplemented media as compared to cells grown in control media. □-□, SK-MG-3; ○-○, SK-MG-5; ●-●, 427-N; △-△, MDA-468; ■-■, A-431.

DISCUSSION

We report here that SK-MG-3 is a cell line derived from a human GM

Karyotypic analysis of SK-MG-3 cells has revealed the presence of 2 to 3

demonstrated (data not shown). As EGFRG amplifications seem to occur in a significant proportion of primary GM (7), the SK-MG-3 line should be useful as a model for further studies investigating the relationship between EGF receptor abnormalities and the neoplastic behavior of certain glioblastomas.

Our results indicate that EGFRG amplifications are less common in cell lines derived from GM than in primary GMs. It has been clearly shown that primary GM tumors are comprised of karyotypically heterogeneous cellular subpopulations (25). It is possible then that most of the cell lines

amplification.

The selective pressures imposed during cell line propagation are not
confer a proliferative advantage to neoplastic cells under certain *in vivo*
conditions, by rendering cells super-sensitive to exogenous or
autocrine-produced mitogens (26). Indeed, the frequency of EGFRG
amplification in less differentiated, more aggressive primary astrocytoma
mechanism of neoplastic progression *in vivo*. However, the rarity of EGFRG
amplifications in astrocytoma cell lines selected and propagated in
monolayer suggests that the amplification does not represent an advantage,
and may even lead to counter-selection, at least under certain culture
conditions.

In squamous cell carcinomas, significant overexpression of EGFR has been
reported in a very high proportion of cell lines (27) and primary tumors
(28), but extensive molecular genetic studies have not yet been reported.
Recently, Merlino et al. have reported a four-fold amplification of the
EGFRG in a squamous carcinoma cell line derived from the human tongue (29).
A-431, another squamous carcinoma cell line, has a ≈ 30 fold amplification
of this gene (20).

SK-MG-3 cells are not growth-inhibited by EGF concentrations that
paradoxically inhibit A-431 and MDA-468, cell lines with about 30 and
20-fold, respectively, amplification of the EGFRG. In these cells,

presence of high concentrations of EGF. All the variants have shown fewer
EGF receptors than the parental cell lines (8,30). Kawamoto et al. (31)
have proposed that there is a relationship between the number of EGF
receptors and growth response to EGF, and that when a given amount of EGF
receptors is exceeded, growth inhibition results on exposure to EGF. There
is no evidence that there is an absolute threshold concentration for
inhibition common to all cells, and the molecular mechanism underlying such
a threshold phenomenon remains unclear.

may be a consequence of the fact that the number of EGF receptors present in
these cells, while elevated, is below a critical threshold. Alternatively,
it can be proposed that the EGF receptors are not functional in this
astrocytoma cell line, but this does not seem to be the case since SK-MG-3
are growth stimulated by EGF at concentrations similar to other cell lines
with functional receptors (Fig. 5). Also, the K_d for EGF binding in SK-MG-3
cells is in the same range as other K_d 's calculated for other cell lines
known to have normal EGF receptors (33).

ACKNOWLEDGEMENTS

This work was supported by grants from the Medical Research Council of Canada and the National Institute of Health (USA) (#CA29526). Michael N. Pollak is a recipient of a Terry Fox Postdoctoral Fellowship from the National Cancer Institute of Canada. We are indebted to Drs. I. Pastan and G. Merlino for providing the pE7 cDNA probe and to I. Robson for the c-erb-B probe. Excellent technical assistance was provided by R. Pullano and B. Choo.

REFERENCES

1. Ullrich, A., Coussens, L., Hayflick, J.S., Dull, T.J., Gray, A., Tam, L.P., Lee, J., Whittle, N., Derynck, R., Underhill, C.B., Chen, W.S., Kaulfer, W., Skolnik, E.S., Weber, W., Evans, T., White, M., Goldfarb, R.H., Cohen, B., Franconi, S., Ullrich, A. (1984) *Proc. Natl. Acad. Sci. U.S.A.* 81, 2758-2762.
2. Lin, C.R., Chen, W.S., Kaulfer, W., Skolnik, E.S., Weber, W., Evans, T., White, M., Goldfarb, R.H., Cohen, B., Franconi, S., Ullrich, A. (1984) *Proc. Natl. Acad. Sci. U.S.A.* 81, 2763-2767.
3. Ullrich, A., Coussens, L., Gray, A., Dull, T.J., Chen, W.S., White, M., Jolly, P., Lironi, L., Rhee, L., Libermann, T.A., Roth, J., Franconi, S., Cohen, B., Goldfarb, R.H., Whittle, N., Underhill, C.B., Lin, C.R., Skolnik, E.S., Kaulfer, W., Weber, W., Evans, T., White, M., Goldfarb, R.H., Cohen, B., Franconi, S., Ullrich, A. (1984) *Proc. Natl. Acad. Sci. U.S.A.* 81, 2768-2772.
4. Brunk, U., Schellens, J. and Westermark, B. (1976) *Exp. Cell. Res.* 103, 295-302.
5. Simpson, D.L., Morrison, R. and Herschman, H.R. (1982) *J. Neurosci. Res.* 8, 453-462.
6. Hirata, Y., Uchihashi, M., Nakajima, H., Fujita, T. and Matsukura, S. (1982) *J. Clin. Endoc. Metab.* 55, 1174-1177.
7. Libermann, T.A., Razon, N., Bartal, A.D., Yarden, Y., Schlessinger, J. and Soreq, H. (1984) *Cancer Res.* 44, 753-760.
8. Libermann, T.A., Nusbaum, H.R., Razon, N., Kris, R., Lax, I., Soreq, H., Whittle, N., Waterfield, M.D. Ullrich, A. and Schlessinger, J. (1985) *Nature (London)* 313, 144-147.
9. Ullrich, A., Coussens, L., Gray, A., Dull, T.J., Chen, W.S., White, M., Jolly, P., Lironi, L., Rhee, L., Libermann, T.A., Roth, J., Franconi, S., Cohen, B., Goldfarb, R.H., Whittle, N., Underhill, C.B., Lin, C.R., Skolnik, E.S., Kaulfer, W., Weber, W., Evans, T., White, M., Goldfarb, R.H., Cohen, B., Franconi, S., Ullrich, A. (1984) *Proc. Natl. Acad. Sci. U.S.A.* 81, 2768-2772.
10. Ullrich, A., Coussens, L., Gray, A., Dull, T.J., Chen, W.S., White, M., Jolly, P., Lironi, L., Rhee, L., Libermann, T.A., Roth, J., Franconi, S., Cohen, B., Goldfarb, R.H., Whittle, N., Underhill, C.B., Lin, C.R., Skolnik, E.S., Kaulfer, W., Weber, W., Evans, T., White, M., Goldfarb, R.H., Cohen, B., Franconi, S., Ullrich, A. (1984) *Proc. Natl. Acad. Sci. U.S.A.* 81, 2768-2772.
11. Pfreundschuh, M., Shiku, H., Takahashi, T., Ueda, R., Ransohoff, J., Oettgen, H.F. and Old, L.J. (1978) *Proc. Natl. Acad. Sci. U.S.A.* 75, 5122-5126.
12. Cairncross, J.G., Mattes, M.J., Bersford, H.R., Albino, A.P., Houghton, A.N., Lloyd, K.O. and Old, L.J. (1982) *Proc. Natl. Acad. Sci. U.S.A.* 79, 5641-5645.
13. Ponten, J. and Macintyre, E.H. (1968) *Acta. Path. Microbiol. Scandinav.* 74, 465-486.
14. Ponten, J. and Macintyre, E.H. (1968) *Scandinav. Sect. A.* 81, 791-805.
15. Fogh, J. Wright, W.C. and Loveless, J.d. (1977) *J. Natl. Cancer Inst.* 58, 209-214.
16. Guzella, J.F., Keys, C., Varsanyi, B.A., Kao, F.T., Jones, C., Puck, T.T., and Housman, D. (1980) *Proc. Natl. Acad. Sci. U.S.A.* 77, 2829-2833.
17. Xu, Y-h., Richert, N., Ito, S., Merlino, G.T. and Pastan, I. (1984) *Proc. Natl. Acad. Sci. U.S.A.* 81, 7308-7312.
18. Chirgwin, J.M. (1979) *Biochem.* 18, 5294-5299.
19. Thomas, P.S. (1980) *Proc. Natl. Acad. Sci. U.S.A.* 77, 5201-5205.
20. Merlino, G.T., Xu, Y.-h., Ishii, S., Clark, A.J.L., Semba, K., Toyoshima, K., Yamamoto, T. and Pastan, I. (1984) *Science* 224, 417-419.
21. Spurr, N.K., Solomon, E., Jansson, M., Sheer, D., Goodfellow, P.W. Bodmer, W.F. and Vennstrom, B. (1984) *EMBO J.* 3, 159-163.
22. Shechter, Y., Hernaez, L. and Cuatrecasas, P. (1978) *Proc. Natl. Acad. Sci. U.S.A.* 75, 5788-5791.
23. King, A.C. and Cuatrecasas, P. (1982) *J. Biol. Chem.* 257, 3053-3060.
24. Matrisian, L.M., Planck, S.R., Finch, J.S. and Magun, B.E. (1985) *Biochim. Biophys. Acta.* 839, 138-146.

25. Shapiro, J.R., Yung, W.A. and Shapiro, W.R. (1981) *Cancer Res.* 41, 2349-2359.
26. Buick, R.N. and Pollak, M.N. (1984) *Cancer Res.* 44, 4909-4918.
27. Cowley, G., Smith, B., Gusterson, F., Hendler, F. and Ozanne, B. (1984) *Cancer Cells*, Vol. 1, pp. 5-10, Cold Spring Harbor Laboratory, New York.
28. Hendler, F.J. and Ozanne, B.W. (1984) *J. Clin. Invest.* 74, 647-651.
- Banks-Schlegel, S. and Pastan, I. (1985) *J. Clin. Invest.* 75, 1077-1079.
30. Buss, J.E., Kudlow, J.E., Lazar, C. and Gill, G.N. (1982) *Proc. Natl. Acad. Sci. U.S.A.* 79, 2574-2578.
31. Kawamoto, T., Mendelsohn, J., Le, A., Sato, G.H., Lazar, C.S. and Gill, G.N. (1984) *J. Biol. Chem.* 259, 7761-7766.
32. Wrann, M.M. and Fox, C.F. (1979) *J. Biol. Chem.* 254, 8083-8086.
33. Carpenter, G., Lemback, K.J., Morrison, M. and Cohen, S. (1975) *J. Biol. Chem.* 250, 4297-4304.